



**RESOLUTION BY THE COUNTY OF JACKSON
IN SUPPORT OF NCDOT CONSTRUCTING A REDUCED CONFLICT INTERSECTION
AT US 23-441 AND GREENS CREEK ROAD**

WHEREAS, NCDOT has identified the intersection of US 23-441 at Greens Creek Road as a safety project to mitigate a pattern of crash history to the south of Dillsboro; and

WHEREAS, analysis of the intersection by NCDOT's Traffic Safety Unit has shown a pattern of crashes involving left turning movements from Greens Creek Road onto US 23-441, with moderate to severe injuries; and

WHEREAS, the safety project would eliminate left turning movement, via installation of a concrete island, requiring a right turn and utilization of a newly constructed U-turn located approximately 1,300 feet to the south of the existing intersection; and

WHEREAS, NCDOT has identified funding for this project via the Highway Safety Improvement Program, as this project is eligible due to the history of crashes at this location over the most recent five years; and

WHEREAS, the Board of County Commissioners is of the opinion the request should be granted, if it meets minimum standards and criteria established by the Division of Highways of the Department of Transportation.

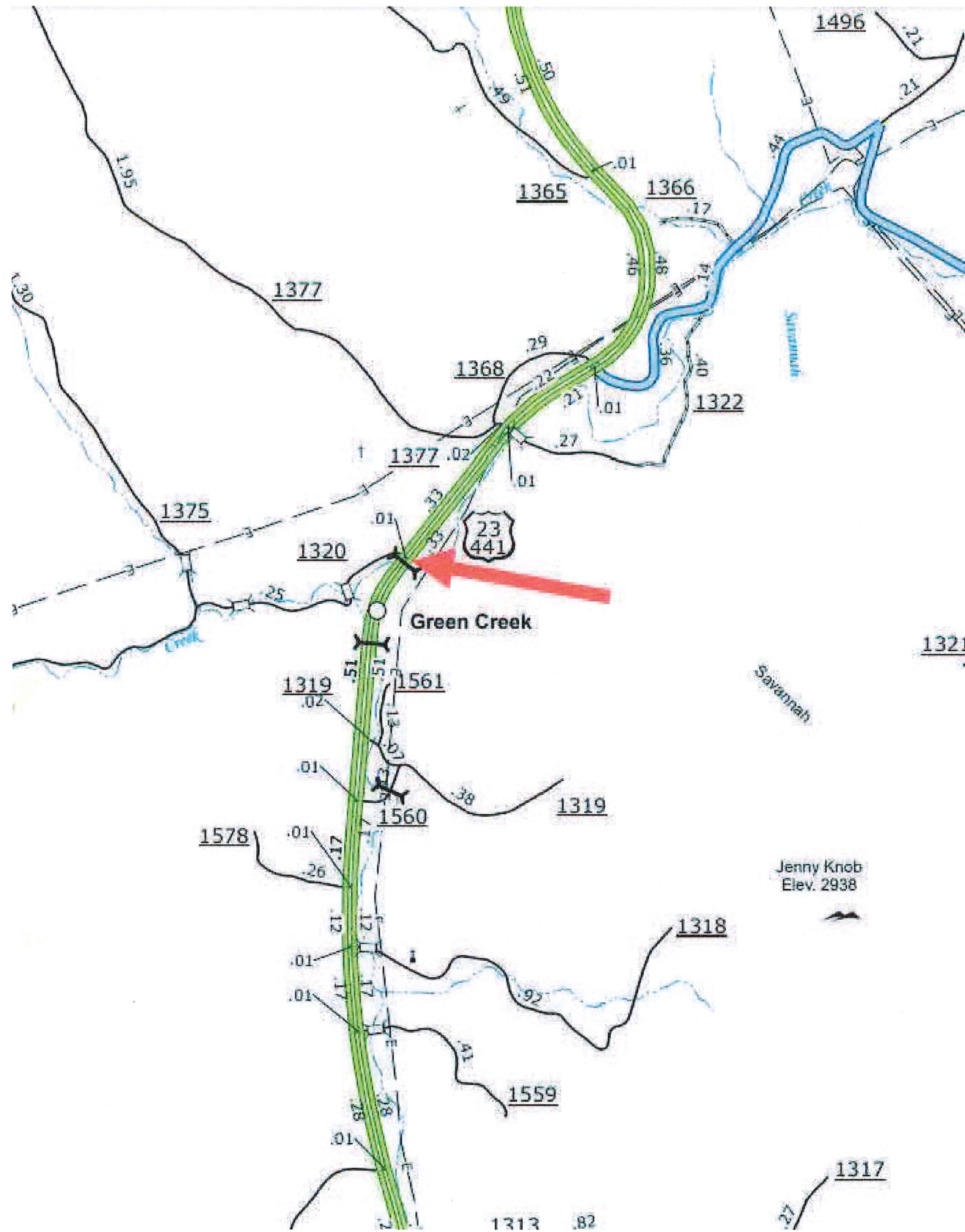
NOW, THEREFORE, BE IT RESOLVED, that the Board of Commissioners of Jackson County hereby requests the Division of Highways to review the recommendation and construct a reduced conflict intersection at US 23-441 and Greens Creek Road.

Adopted this the 6th day of August, 2024.

Mark A. Letson, Chair
Jackson County Board of Commissioners

ATTEST:

Angela M. Winchester Clerk to the Board





Staffed Recycling Center

US Hwy 441

23

3

US Hwy 441

441

441

US Hwy 441

Greens Creek Rd

Savannah Creek

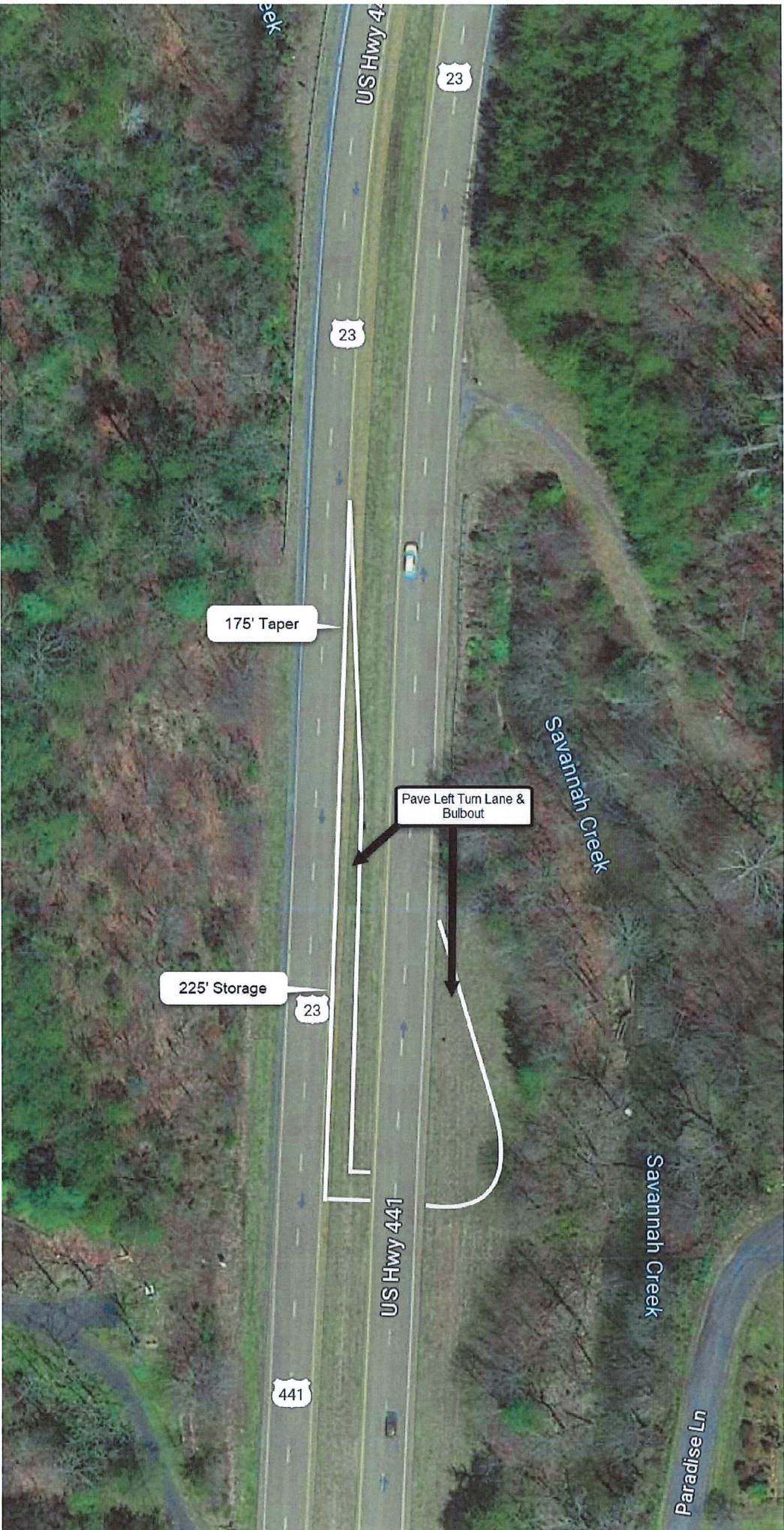
1370

Greens Creek Rd

Savannah Creek

Savannah

ek



175' Taper

Pave Left Turn Lane & Bulbout

225' Storage

US Hwy 441

23

23

441

Savannah Creek

Savannah Creek

Paradise Ln



Greens Creek Intersection.
Proposed Concrete Islands

Proposed U-Turn Bulb Out
Location

Measure distance ✕
Click on the map to add to your path
Total distance: 1,323.01 ft (403.25 m)