

Field Report



C L A R K N E X S E N

421 North Harrington Street, Suite 600

Raleigh, NC 27603

P: 919.828.1876

F: 919.828.1877

Project: Jackson County Recreation Center - Aquatics

Date: 12/07/2023

Comm #: 7584-A

Time: 11:00 am

Report By: Rodel Dating, PE

Field Report #: E1

Temperature 38°F - 48 °F

Range:

Location: Cullowhee, NC

Weather: Sunny

PRESENT AT SITE:

Troy Evans, New Atlantic

Dorothea Schulz, CN (intermittent presence)

Rodel Dating, CN

WORK IN PROGRESS/ OBSERVATIONS:

1. Service transformer, utility meter enclosure, accessible outdoor service disconnect switch have been installed.
2. Major electrical equipment such as ATS-OS, ATS-E, stepdown transformers XE and XOS has been installed.
3. Tubs for panelboards have been installed.
4. Feeder conductors for panels have been pulled.
5. Conductor terminations in progress for Panel HMDP.
6. Installation of equipotential bonding conductors (#8 bare copper) for Competition Pool in progress.

ITEMS TO VERIFY/ACTION:

1. Provide temporary protection for all installed electrical equipment (currently not energized) as per specs section 262416, part. 1.10 (A), specs section 017300 part 3.5 (C), 3.10 (A) and (C). Electrical Rooms 190 and 169 currently have no doors. Provide temporary doors, temporary plastic covering for equipment, and temporary heating for electrical equipment. See photos 2, 3, 4, & 5.
2. Provide equipotential bonding between the Competition pool shell and pool perimeter surfaces as per 2020 NEC and drawing no. AQ603, detail 9. See photos 6 & 7.
3. Make sure that the building steel column is grounded/bonded and will be included as part of the electrical grounding system as shown on Detail 3, drawing EP501.
4. Telecom cable tray at ceiling space of Wet Corridor 180 with gypsum board ceiling will require ceiling access panels to allow maintenance of all telecom cables. Coordinate with the Architect/Engineer to make sure that accessibility is provided. See photo 8.
5. Perform routine housekeeping. See specs section 017300, part 3.8.

Field Report



ATTACHMENTS (PHOTOS, SKETCHES, ETC.): See below:

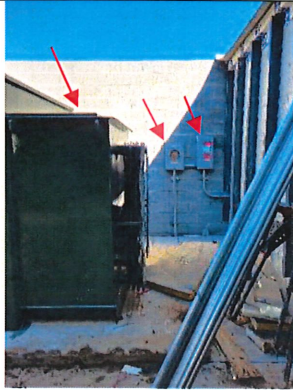


Photo 1: Service transformer, meter box, and accessible service disconnect – Mech Yard M.

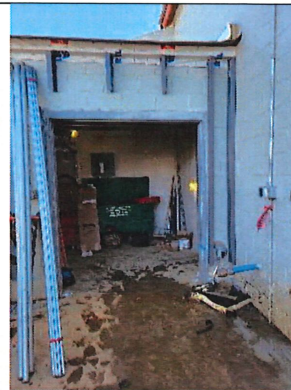


Photo 2: Electrical Room 190 exterior door.

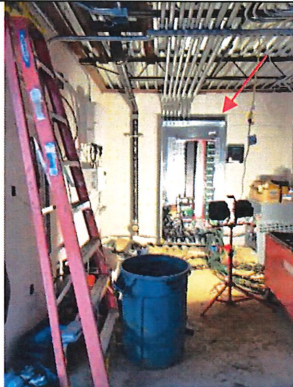


Photo 3: Panel HMDP – Electrical Room 190.

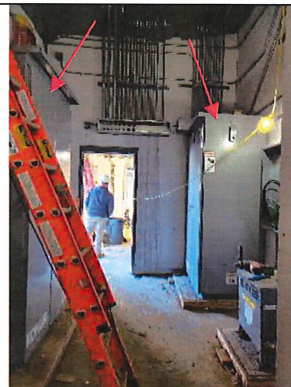


Photo 4: ATS-OS and ATS-E – Electrical Room 169.



Photo 5: Panel HE tub, Xfmr XE, and Panel LE tub – Electrical Room 169.



Photo 6: One end of a bare copper conductor #8 AWG ready for equipotential bonding to the pool perimeter surface structural reinforcing steel bar – southeast of Competition

Field Report



Pool Deck 181. Each red arrow represents a bonding conductor.

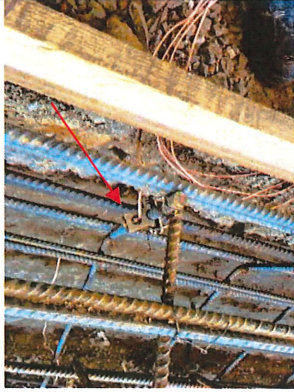


Photo 7: One end of a bare copper conductor #8 AWG bonded to Competition Pool shell (wall) reinforcing steel bar with a mechanical clamp/connector.



Photo 8: Telecom cable tray at ceiling space – Wet Corridor 180.