




Total Solar Eclipse
Monday, Aug. 21, 2017

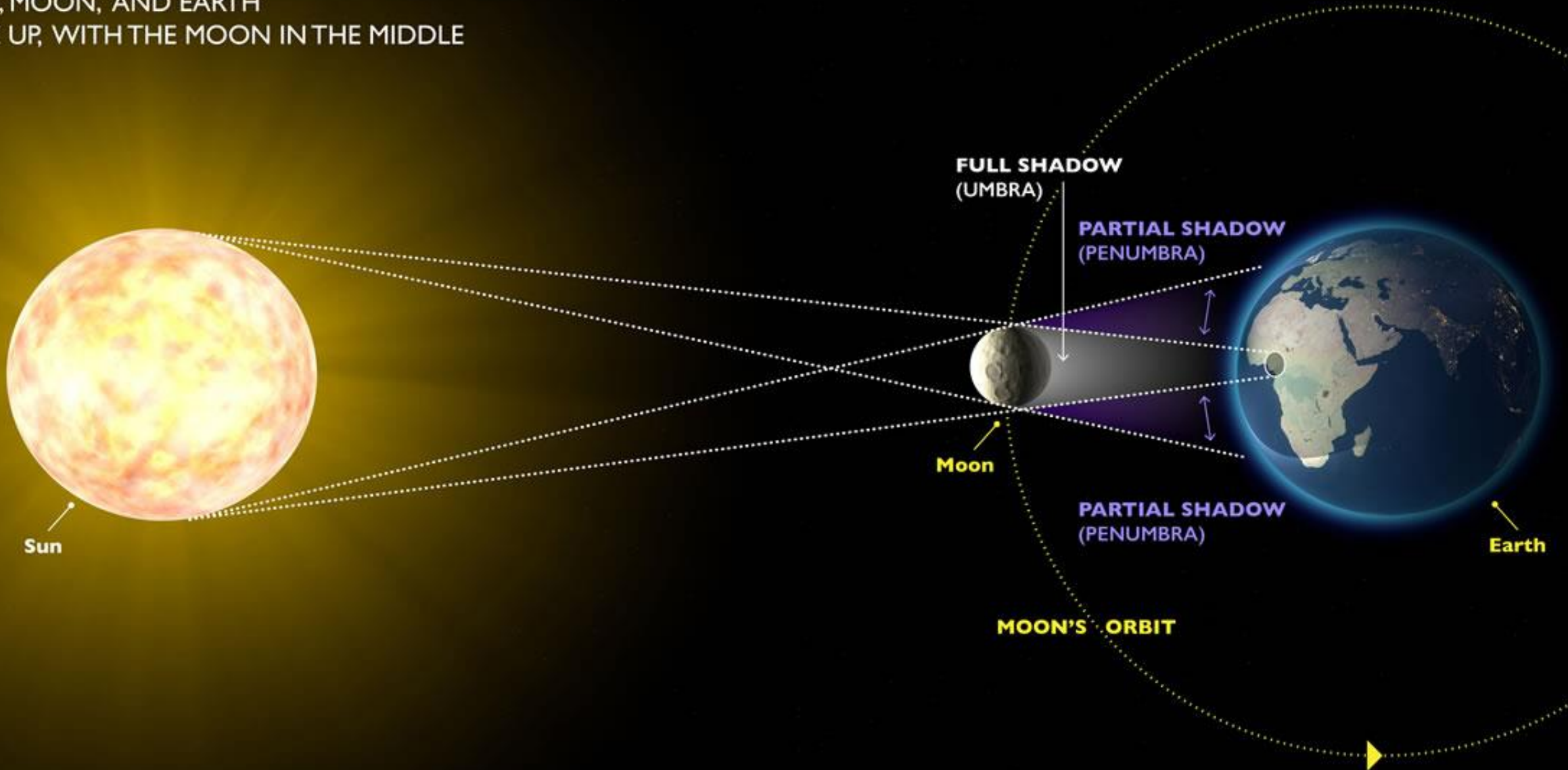
www.NCEclipse.com




A solar eclipse happens when
the Moon, in the “new moon
phase” passes between Earth
and the Sun

SOLAR ECLIPSE

SUN, MOON, AND EARTH
LINE UP, WITH THE MOON IN THE MIDDLE

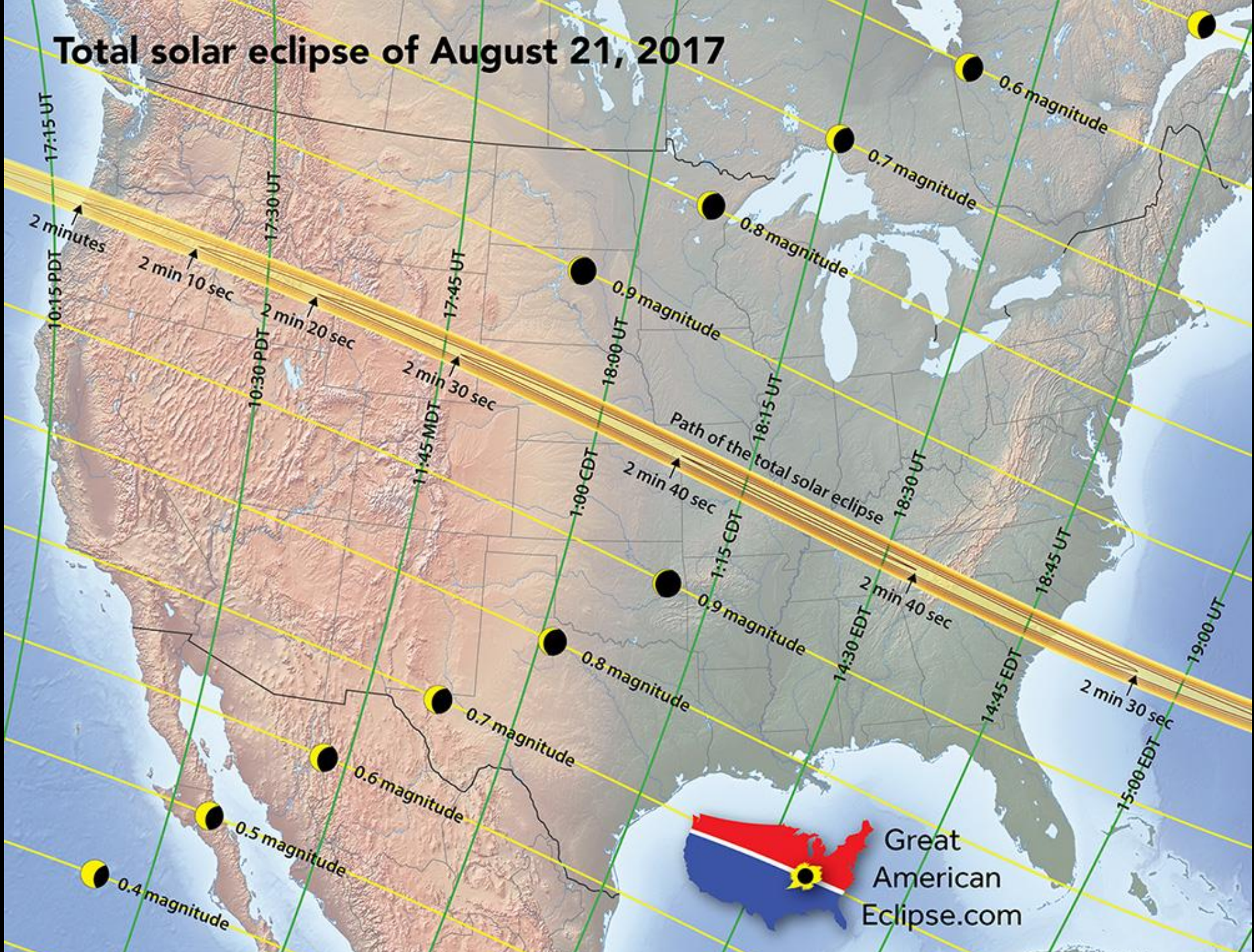






The total solar eclipse 2017 has been coined “The Great American Solar Eclipse” because it is the only solar eclipse to appear across the entire continent of North America in recent history.

Total solar eclipse of August 21, 2017



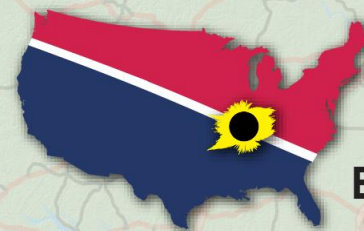
Location	Most recent totality	Next scheduled Totality	Number of years between eclipses
Anchorage, Alaska	1943, Feb. 4	2399, Aug. 2*	456.5
Atlanta, Ga.	1778, June 24	2078, May 11	299.5
Boston, Mass.	1959, Oct. 2	2079, May 1	119.6
Calgary, Alberta	1869, Aug. 7	2044, Aug. 23	175.0
Chicago, Ill.	1806, June 6*	2205, July 17	399.1
Dallas, Texas	1623, Oct. 23	2024, April 8	401.5
Denver, Colo.	1878, July 29	2045, Aug. 12	167.0
Halifax, Nova Scotia	1970, March 7	2079, May 1	109.1
Hamilton, Bermuda	1532, Aug. 30**	2352, Feb. 16	819.5
Honolulu, Hawaii	1850, Aug. 7	2252, Dec. 31	402.4
Houston, Texas	1259, Oct. 17**	2200, April 14	940.5
Las Vegas, N.V.	1724, May 22	2207, Nov. 20	483.5
Los Angeles, Calif.	1724, May 22	3290, April 1	1565.9
Mexico City, Mexico	1991, July 11	2261, Dec. 22	270.4
Miami, Fla.	1752, May 13*	2352, Feb. 16	599.8
Montréal, Quebec	1932, Aug. 31*	2024, April 8*	91.6
New Orleans, La.	1900, May 28	2078, May 11	178.0
New York, N.Y.	1925, Jan. 24*	2079, May 1	154.3
Phoenix, Ariz.	1806, June 16	2205, July 17	399.1
St. Louis, Mo.	1442, July 7**	2017, Aug. 21*	575.1
San Francisco, Calif.	1424, June 22**	2252, Dec. 31	828.5



The last total solar eclipse viewable in Jackson County was July 20, 1506. The next total solar eclipse to pass through Jackson County won't be until October 17, 2153.

Total solar eclipse over North Carolina

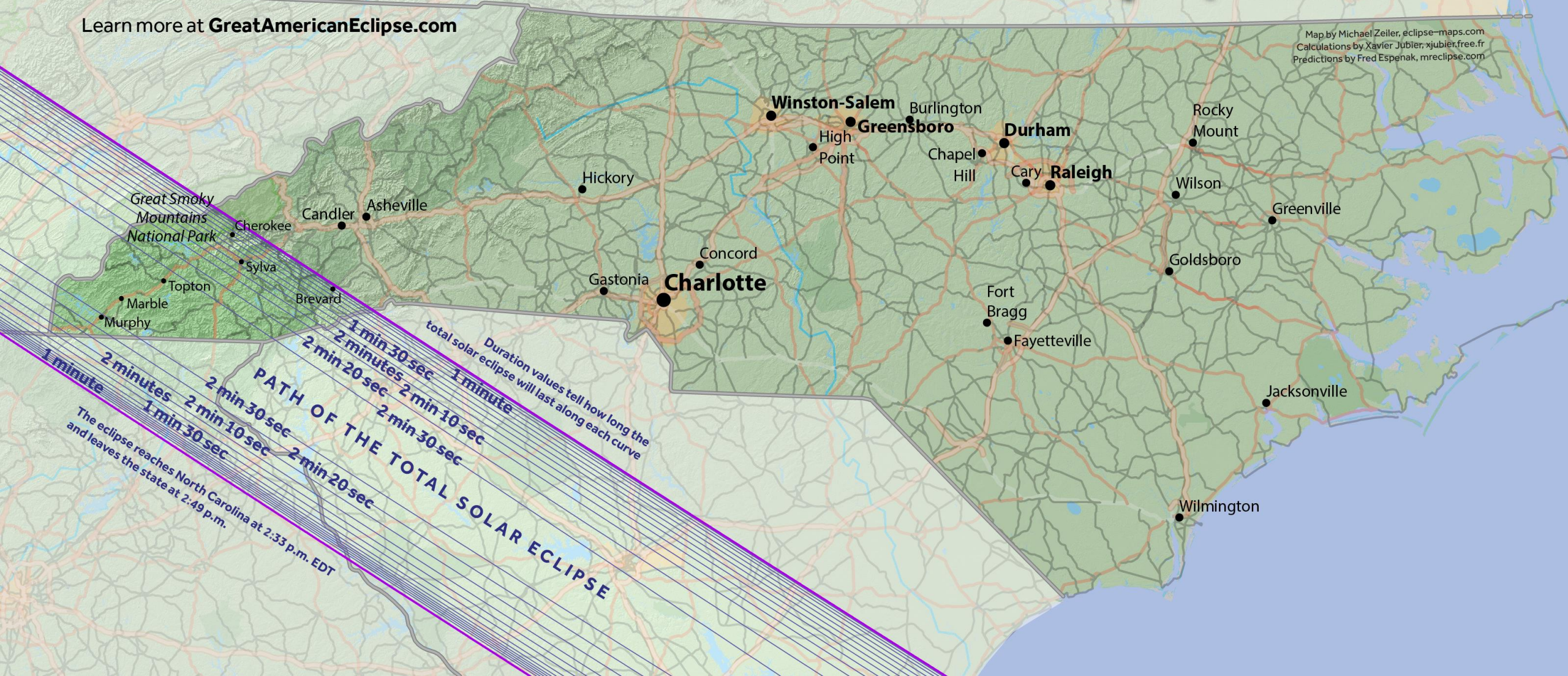
A total solar eclipse will cross the United States from Oregon to South Carolina on August 21, 2017. This is the grandest spectacle in the sky and you should see this at least once in your life. To see day turn to night and the majesty of the Sun's corona, travel to a location inside the path of the eclipse.



Great American Eclipse


Learn more at GreatAmericanEclipse.com

Map by Michael Zeiler, eclipse-maps.com
Calculations by Xavier Jubier, xjubier.free.fr
Predictions by Fred Espenak, mreclipse.com





On average, only 1 in 1,000
people have ever witnessed a
total solar eclipse.

- 
- During an eclipse, air temperatures can drop from 10 to 20 degrees.
 - Bright stars and planets will become more visible during the solar eclipse
 - Animals may behave as if night has arrived – cows go back to barns and birds stop chirping

Phases of the Eclipse



First Contact

Edge of the Moon starts to overlap the edge of the Sun. The eclipse begins.



Second Contact

The Moon covers the entire disc of the Sun. Total eclipse begins.



Totality

Max phase of a Total Solar Eclipse. The Sun is completely covered.



Third Contact

Moon starts moving away. Parts of the Sun's disc reappears.



Fourth Contact

Moon stops covering the Sun. The Eclipse ends.

Times for Sylva:

1:06:54 PM

2:35:49 PM

2:36:42 PM

2:37:34 PM

4:00:48 PM



200 million people live within a
days drive of the path of 'Totality'

Around 20,000 expected in
Jackson County

JCTDA EFFORTS

- The JCTDA led planning in Q1, 2016 for the Solar Eclipse (Over 500 days ago) Representatives from education, healthcare, economic development, planning, tourism, infrastructure and government were at the table.
- Early stakeholder meetings allowed Jackson County to formulate plans for eclipse viewing sites, public safety, educational events and more. With these in place we were able to position Jackson County as a prime viewing site for the eclipse.
- The JCTDA created and funded a Solar Eclipse Grant Program to allow for two public events in Cashiers & Sylva. The Chamber Directors and town manager worked with the JCTDA on event plans, and the TDA granted \$9,000 for programming the events. Funds are being used for entertainment, event promotion, bathrooms, signage, & cleanup.

JCTDA EFFORTS

- Created www.NCEclipse.com with event information, events, lodging availability, parking maps, visitor tips, and more. Over 17,000 site visits to date.
- Worked with the N.C. DOT Congestion Management office to better understand traffic impact. The study they generated will optimize traffic timings/patterns in Jackson County.
- Lodging – 100% occupancy rate expected for Aug. 20. All accommodations sold out.
- Chambers will staff tents at event sites. JCTDA will provide free water and sunscreen at both events. This solar eclipse will likely be the first time many of these visitors have been here; we want them to have a great experience to turn them into repeat visitors. We created a 'Visitor Bucket List' of things to check out while here.
- Worked with the restaurant industry in Jackson County to prepare them for the demand expected and maintain quality-of-service.

JCTDA EFFORTS

- Through the early promotion of events, we have positioned Jackson County as one of the premier places in the Country to view the Eclipse.
- Through JCTDA public relations efforts, we had 122,935,820 impressions, totaling an editorial value: \$1,867,542.57.

Featured in: AAA Go Carolinas • Asheville Citizen-Times • Associated Press
Atlas Obscura • Bartlett Express • Boston Globe • Budget Travel • Carolina Country
Charlotte Observer • Charlotte on the Cheap • Citizen-Times • Edge Media Network
• Expedia Viewfinder Travel Blog • Gaston Gazette • Georgia Mountain Laurel
Horizon Asia • Macon County News • Men's Journal • Mountain Xpress Piedmont
Parent • Raleigh Magazine • Romantic Asheville • Smoky Mountain Living
Southbound • Southeastern Traveler • Tampa Bay Times • The Fayetteville Observer
The News & Observer • The News-Review • The Sylva Herald • Times Union
Travel + Leisure online • True Viral News • Visit NC • Washington Post
WLOS ABC News 13 • WLOS-TV • WNC Magazine

ECLIPSE EYE SAFETY

**DO NOT LOOK DIRECTLY AT THE SUN.
YOU MUST USE SOLAR GLASSES
(NOT SUNGLASSES) OTHERWISE
PERMANENT DAMAGE CAN OCCUR**

Learn how to view safely: <http://eclipse2017.nasa.gov/safety>



NORTH CAROLINA MOUNTAIN TOWNS OF CASHIERS,
CHEROKEE, DILLSBORO AND SYLVA

**Share Your Eclipse Photos With The
Hashtag #NCEclipse. Event updates on
Twitter: @NCEclipse.**





2017

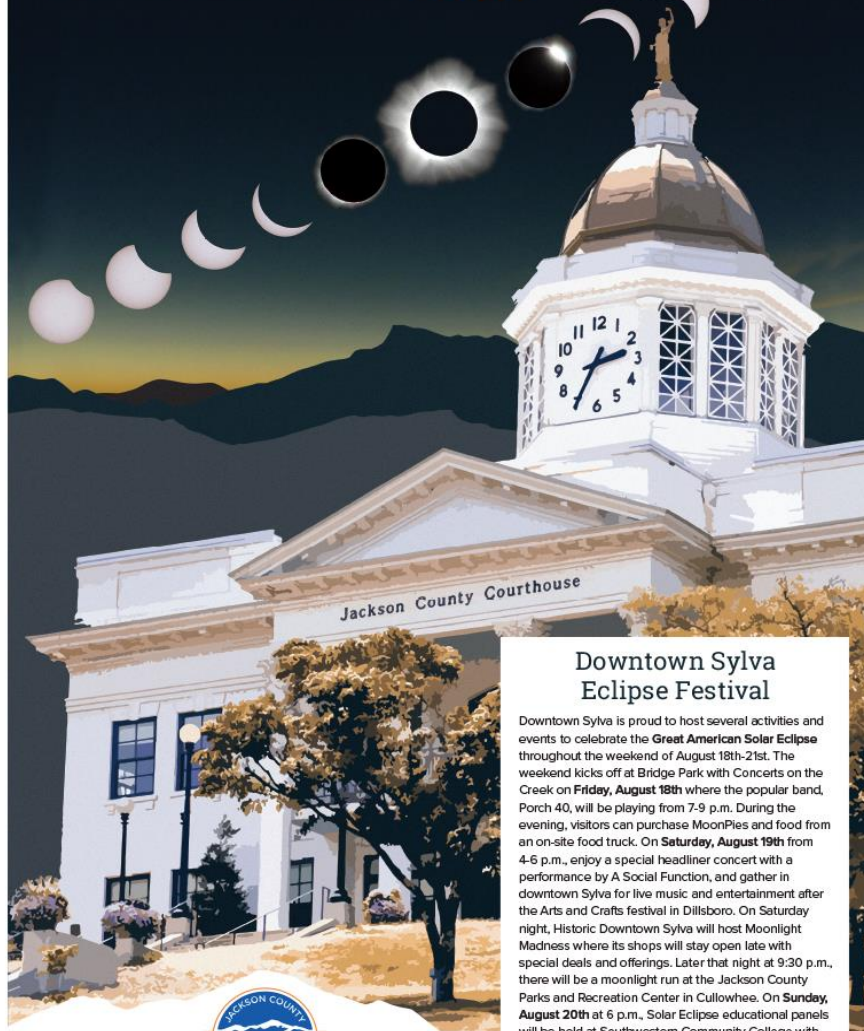
TOTAL SOLAR ECLIPSE Come Ready to Play On!

The North Carolina Mountain Towns of
Cashiers, Cherokee, Dillsboro and Sylva

Join us at 2:35pm on August 21, 2017
as Jackson County residents and visitors will have a
chance to watch as the moon moves fully in front of
the sun for the first time in 26 years in the USA.

To learn more, visit NCEclipse.com
1.800.962.1911

Total Solar Eclipse AUGUST 21 2017



Downtown Sylva Eclipse Festival

Downtown Sylva is proud to host several activities and events to celebrate the **Great American Solar Eclipse** throughout the weekend of August 18th-21st. The weekend kicks off at Bridge Park with Concerts on the Creek on **Friday, August 18th** where the popular band, Porch 40, will be playing from 7-9 p.m. During the evening, visitors can purchase MoonPies and food from an on-site food truck. On **Saturday, August 19th** from 4-6 p.m., enjoy a special headliner concert with a performance by A Social Function, and gather in downtown Sylva for live music and entertainment after the Arts and Crafts festival in Dillsboro. On Saturday night, Historic Downtown Sylva will host Moonlight Madness where its shops will stay open late with special deals and offerings. Later that night at 9:30 p.m., there will be a moonlight run at the Jackson County Parks and Recreation Center in Cullowhee. On **Sunday, August 20th** at 6 p.m., Solar Eclipse educational panels will be held at Southwestern Community College with Astronomy Professors and subject matter experts. On **Monday, Aug. 21st**, the day of the **TOTAL SOLAR ECLIPSE**, festivities begin at Bridge Park around 11 a.m. with a performance by the Colby Deltz Band, as well as talks from subject matter experts leading up to the eclipse, totality is at 2:35 p.m. Join us on the big day for demonstrations, food trucks, and much more!



LEARN MORE AT:

www.NCEclipse.com

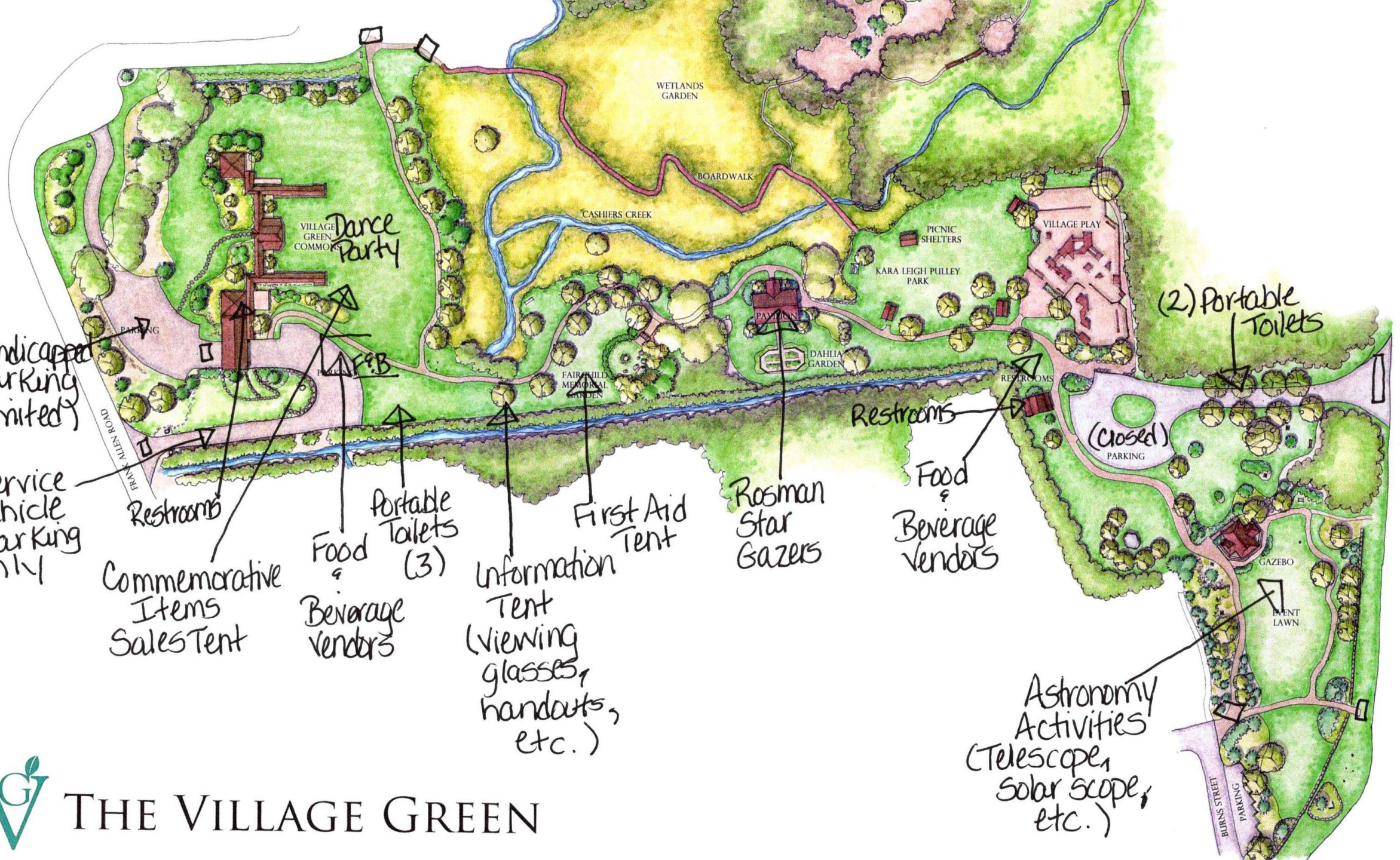
Events for the eclipse in Jackson County

Two designated event sites:

- Cashiers Village Green
- Sylva's Bridge Park
 - Viewers also observe at Monteith Park, Cullowhee and Cashiers Rec Centers, East Laporte and anywhere with a clear view of the sky.

CASHIERS ECLIPSE FEST

- Aug 21. Solar Fest - Visitors can try several local food trucks such as Glenville's own Flip & Whip, enjoy beer by The Ugly Dog Public House and Satulah Mountain Brewing, and sweet treats and ice cream from Cream & Flutter.
- A live music performance by Coconut Groove, a 60's/70's cover band, will entertain guests throughout the day.
- The U.S. Postal Service will be on site to sell and cancel commemorative Solar Eclipse stamps.



Handicapped parking (limited)

Service vehicle parking only

Commemorative Items Sales Tent

Food & Beverage Vendors

Information Tent (viewing glasses, handouts, etc.)

Rosman Star Gazers

Food & Beverage Vendors

Astronomy Activities (Telescope, solar scope, etc.)

(2) Portable Toilets

(Closed) PARKING



THE VILLAGE GREEN

SYLVA ECLIPSE FEST

- The weekend kicks off at Bridge Park with Concerts on the Creek on Friday, August 18th where the popular band, Porch 40, will be playing from 7-9 p.m. During the evening, visitors can purchase MoonPies and food from an on-site food truck.
- On Saturday, August 19th from 4-6 p.m., enjoy a special headliner concert with a performance by A Social Function, and gather in downtown Sylva for live music and entertainment after the Arts and Crafts festival in Dillsboro.
- On Saturday night, Historic Downtown Sylva will host Moonlight Madness where its shops will stay open late with special deals and offerings. Later that night at 9:30 p.m., there will be a moonlight run at the Jackson County Parks and Recreation Center in Cullowhee.

SYLVA ECLIPSE FEST

- On Sunday, August 20th at 6 p.m., Solar Eclipse educational panels will be held at Southwestern Community College with Astronomy Professors and subject matter experts.
- On Monday, Aug. 21st, the day of the TOTAL SOLAR ECLIPSE, festivities begin at Bridge Park around 11 a.m. with a performance by the Colby Deitz Band, as well as talks from subject matter experts leading up to the eclipse, totality is at 2:35 p.m. Join us on the big day for demonstrations, food trucks, and much more!



Entrance

HANDICAP ONLY

VIEWING SITE

SHUTTLE DROPOFF

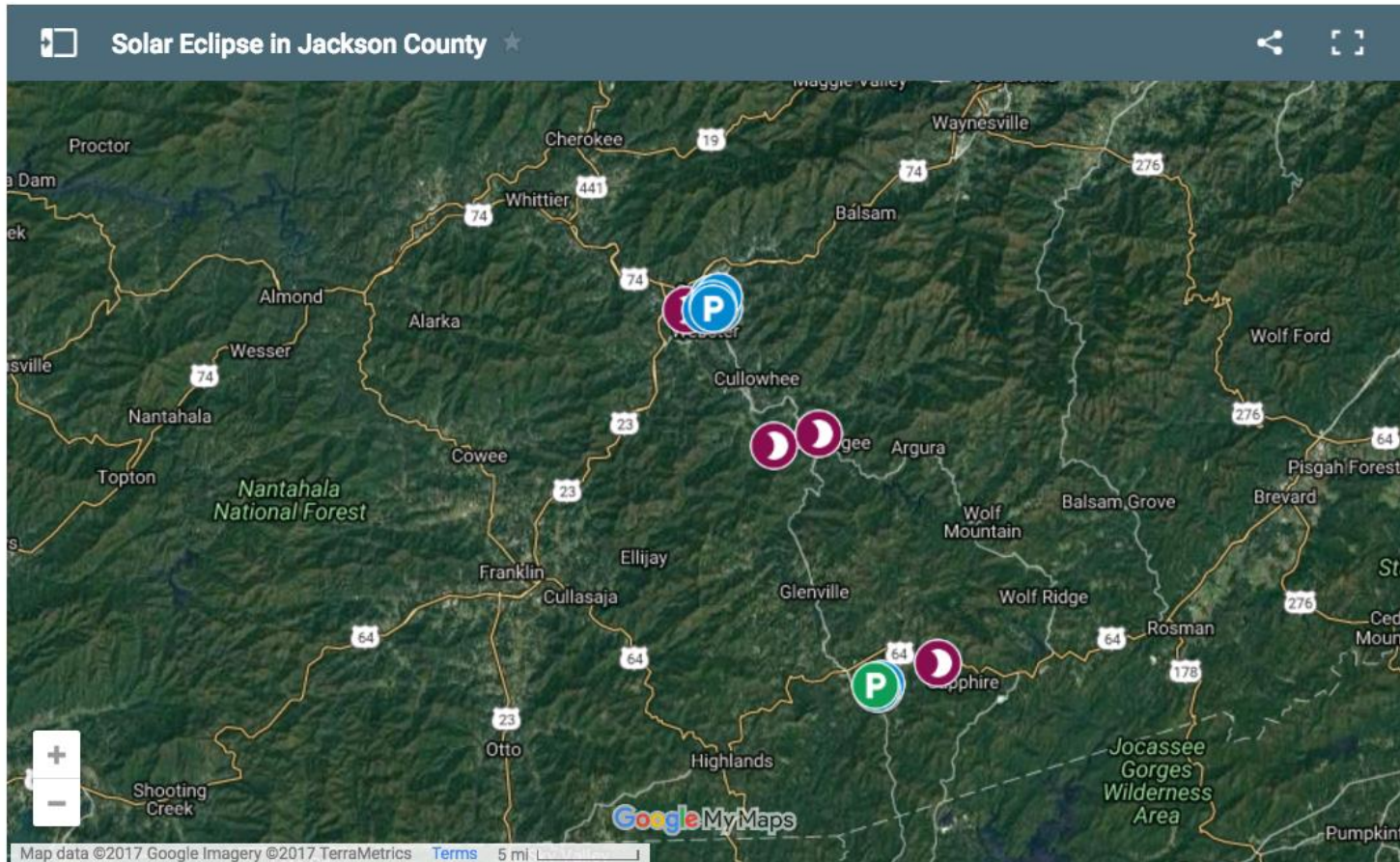
ROAD CLOSED

Entrance

Entrance

ROAD CLOSED

Viewing Locations & Parking





Learn more at www.NCEclipse.com