

Sylva Garden Club Proposal to the Jackson County Commissioners

For the January 29, 2015 County Commissioners Meeting

The Sylva Garden Club wants to build a pavilion in Bicentennial Park and donate it to Jackson County, hopefully within the next 5 years or sooner. We have already raised about a third of the proposed cost.

Please see the photographs and material list for the design as planned.

It will be 12 feet by 12 feet with each corner having 3 ½ foot to 4 foot benches.

It will have electric outlets and a light that will come on at dusk and turn off at dawn.

We see the use of this small Pavilion to host outdoor weddings, Picnics and family reunions. The Children's Librarian, when she heard of our idea, was delighted as she sees walking the children down to the Pavilion in the summer for story time.

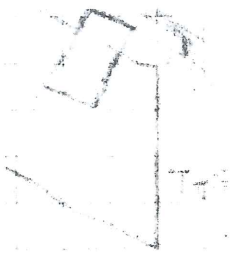
We have contacted Rusty Ellis, Director of Recreation and Parks, and he sees no problem with adding it to his list of parks for those that want to reserve it for activities.

We have contacted Gerald Green, Community Development, and he has said it will be a nice asset to the community.

The benches will give anyone the opportunity to sit in the beautiful park and read a book.

The Sylva Garden Club created Bicentennial Park in 1976 and has been maintaining it all these years with the help of the Jackson County Grounds crew.

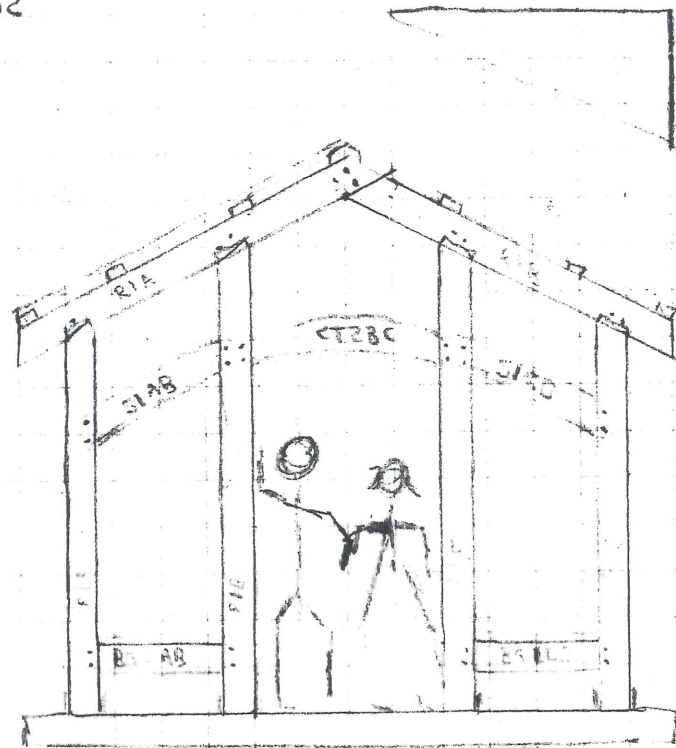
In 2013 the Sylva Garden Club we had the American Chestnut Foundation plant a new American Chestnut hybrid in the Park.



31 PEGS

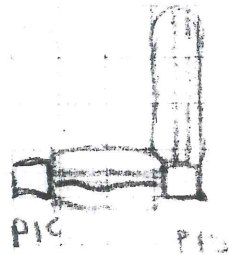
$$\frac{31}{52}$$

BENCH
 12
 6



1"

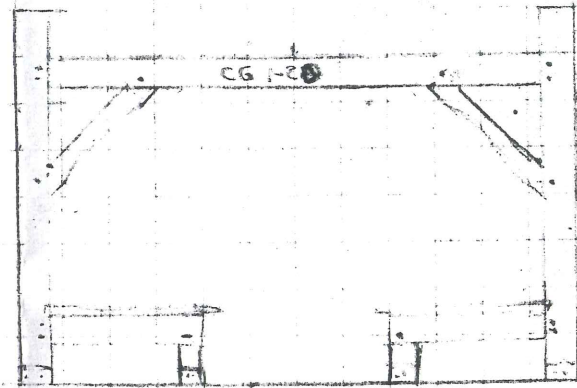
BENT 1
 BENT 2



© ADAM GELBAUGH

- 2
- 2
- 2
- 2
- 2
- 2
- 2
- 2
- 2
- 2
- 2

4 PEGS



WALL A
 WALL B

- B1 4x8x4
- B1
- B1
- B1
- P1 4x8x4
- P1
- P3
- P1
- P1
- P1
- P1

R1A	8x8x10
R1B	8x8x10
R2A	8x8x10
R2B	8x8x10
F1A	8x8x9
P1B	8x8x11
P1C	8x8x11
P1D	8x8x9
P2A	8x8x9
P2B	8x8x11
P2C	8x8x11
P2D	8x8x9
S1AB	4x8x4
CT1BC	4x8x5
S1CD	4x8x4
S2AB	4x8x4
CT2BC	4x8x5
S2CD	4x8x4
BG1AB	6x8x4
BG1CD	6x8x4
BG2AB	6x8x4
BG2CD	6x8x4
NG1A	6x8x4
WGRA	6x8x4
WG1D	6x8x4
WG2D	6x8x4
CG1-2A	6x8x12
CG1-2B	6x8x12

CONCRETE BENCH



