



MOUNTAIN
PROJECTS

A heart-shaped graphic containing stylized human figures in purple and brown, symbolizing community and support. The heart is outlined in brown and filled with a light purple color. Inside, several human figures are depicted in various poses, some appearing to be dancing or celebrating. The figures are colored in shades of purple and brown.

Helping People Help Themselves

A BRIEF MPI HISTORY

1965 –

- Chartered as a non-profit with a united partnership between Haywood and Jackson counties.
- Jackson County Commissioners provided a loan for the first payroll.

Early 70's –

- Haywood Board of Commissioners provided the old Saunook School for an expansion location near the Haywood/Jackson line.

Growth -	Year 1	\$ 52,021
	Year 52	\$ 13,277,072

CURRENT NUMBERS

140 Current Staff

~ **40** staff reside or work in Jackson County.

- Jackson County office on Schulman St.

1,800+ assisted with compliance with the Affordable Care Act

31,000+ meals provided annually through Food Services

200+ volunteers associated with agency programs

\$6,000,000+ spent in Jackson County

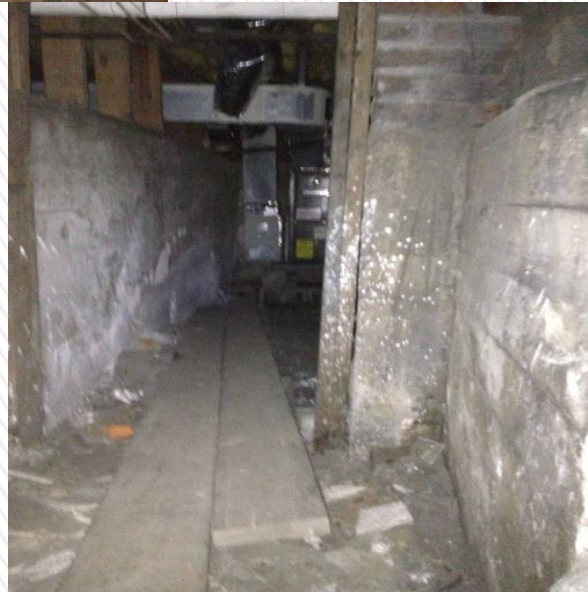
Our 105 year old school...



You can make anything look good.



THE BASEMENT





THE BASEMENT





THE BASEMENT



THE BASEMENT



NEW OFFICE SPACE

Board Committee searched locations without success.

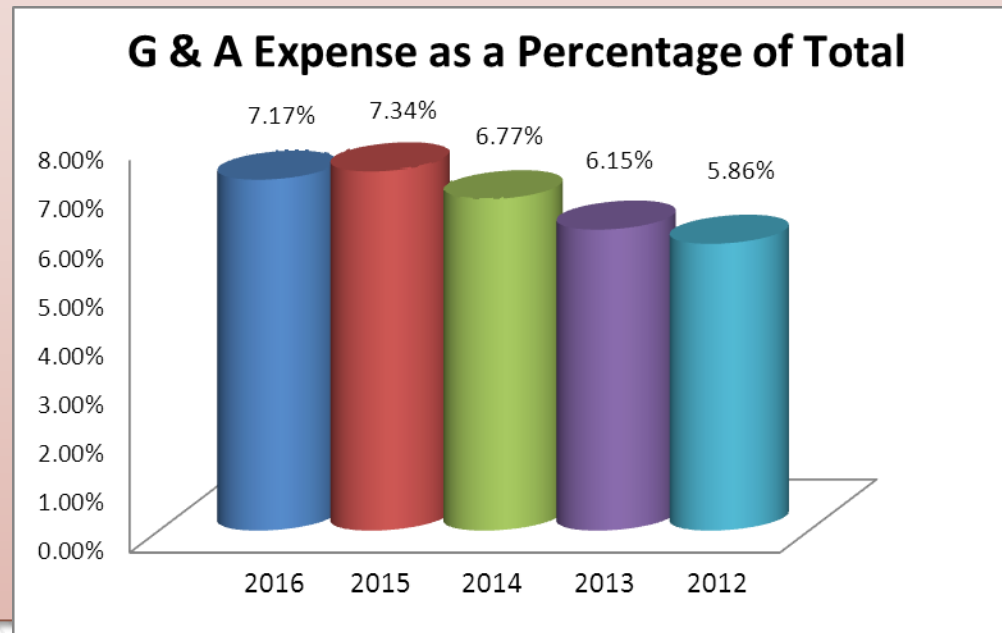
Decision- make offer for previous Health Department building on Asheville Hwy

\$325,000- potential purchase price (\$113,000 cost reduction).

County providing financing and project manager who is an employee of the county.

Challenges

- » No current mortgage payment in budget
- » USDA loan
- » Minimal rehab cost - \$632,000
- » Low overhead



Supporting Mountain Projects

➤ Needs

- Funds to support relocation - \$150,000
- Consideration of reoccurring funding comparable with Haywood County

➤ Current Support

- **Haywood County**
 - Building Reduction/ Professional assistance/A potential financing option
 - In-Kind and support beyond the building acquisition**\$ 571,017**
- **Jackson County**
 - **\$23,447**

Supporting Mountain Projects

Comparison –

Jackson tax base:

\$9,274,970,668

Haywood tax base:

\$7,338,000,000